

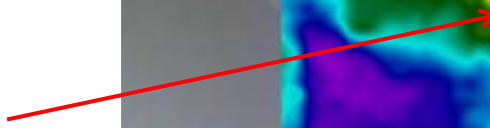
## Measurements °F

Sp1	81.6
-----	------

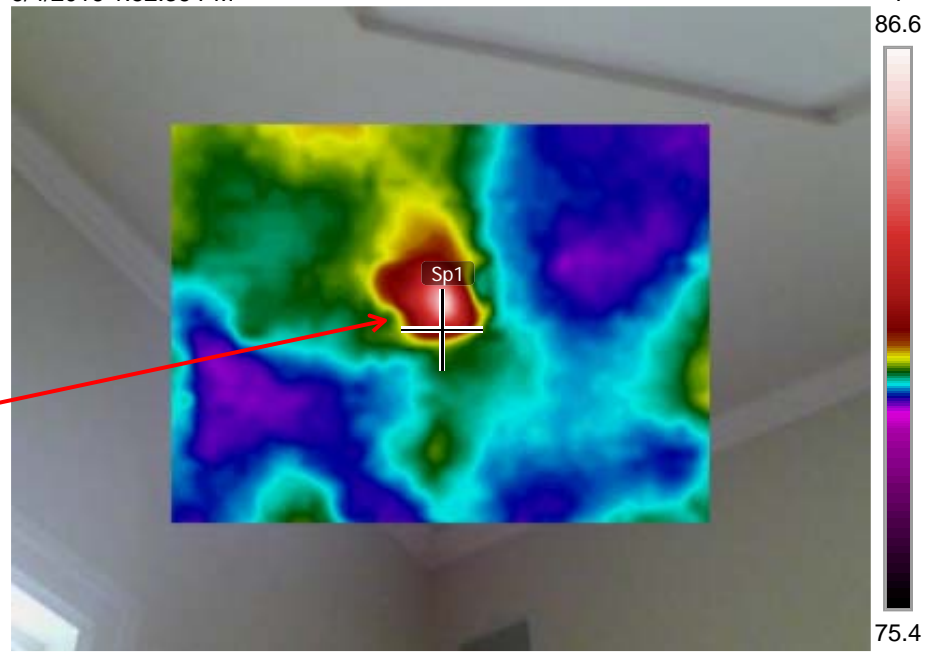
## Parameters

Emissivity	0.95
Refl. temp.	68 °F

An unusual indication of elevated heat behind sheetrock ceiling in Family Room. Possible recessed lighting fixture covered by sheetrock during construction.



6/4/2016 1:52:36 PM

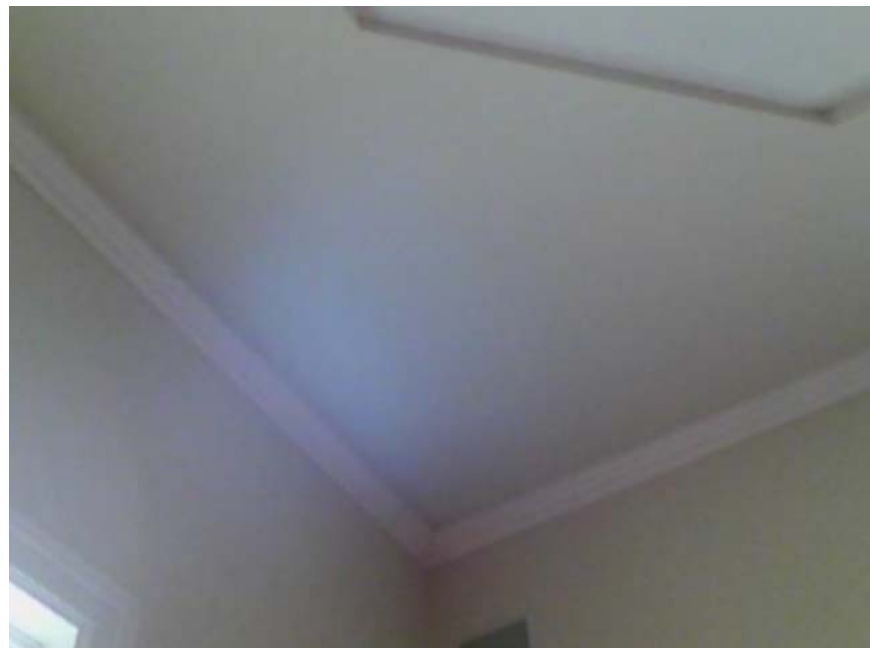


FLIR0083.jpg

FLIR C2

720041374

6/4/2016 1:52:36 PM



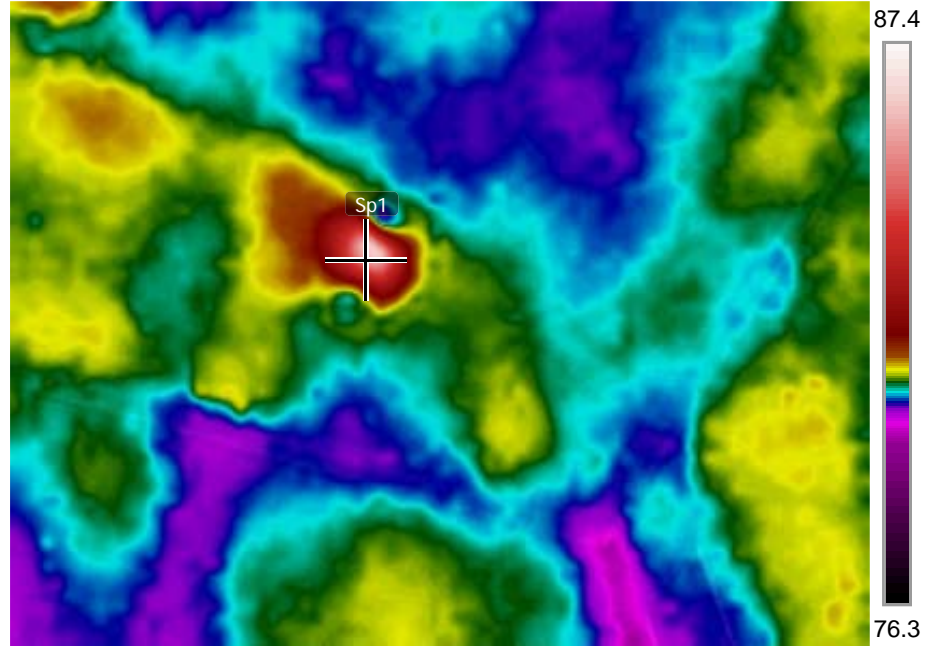
FLIR0083.jpg

FLIR C2

720041374

Measurements		°F
Sp1	85.3	
Parameters		
Emissivity	0.95	
Ref. temp.	68 °F	

6/4/2016 2:04:27 PM



FLIR0084.jpg

FLIR C2

720041374

6/4/2016 2:04:27 PM

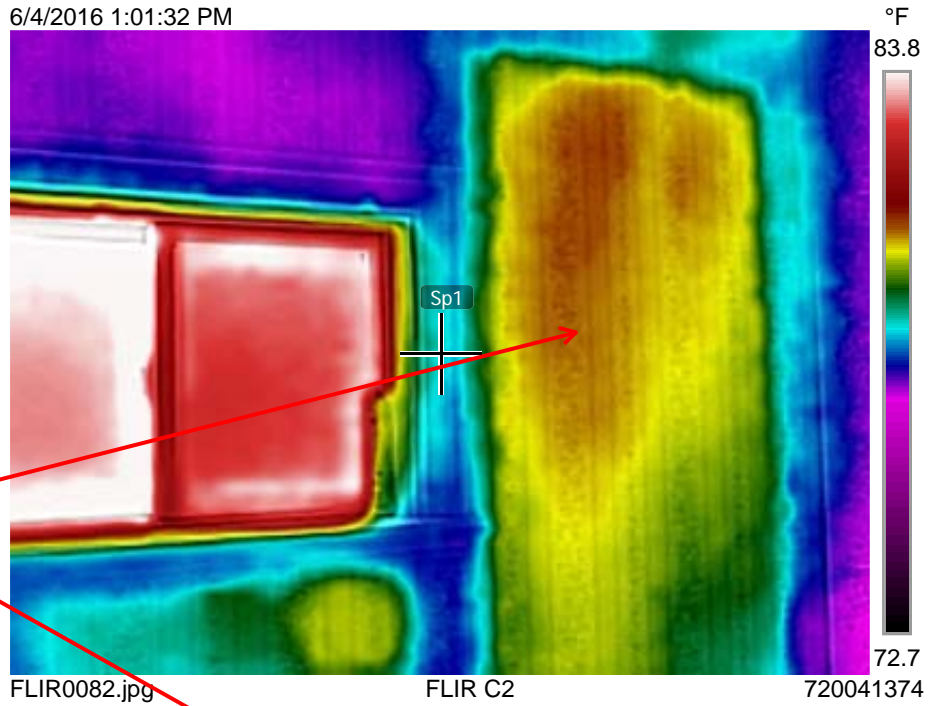


FLIR0084.jpg

FLIR C2

720041374

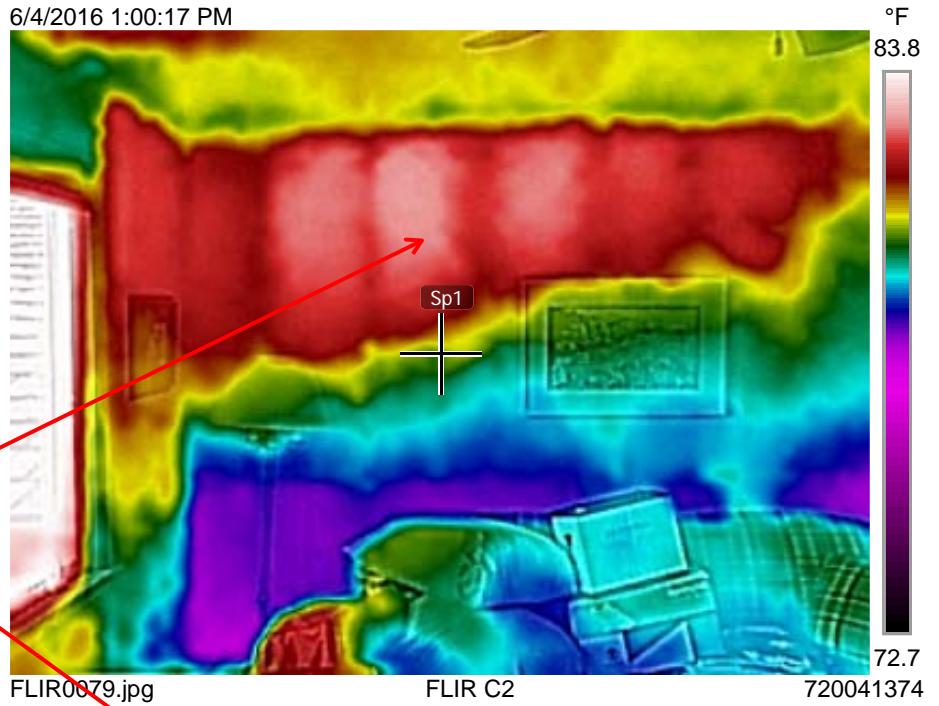
Measurements		°F
Sp1	78.8	
Parameters		
Emissivity	0.95	
Ref. temp.	68 °F	



Little to no insulation in walls.



Measurements		°F
Sp1	80.6	
Parameters		
Emissivity	0.95	
Ref. temp.	68 °F	



This area exposed to exterior with no insulation



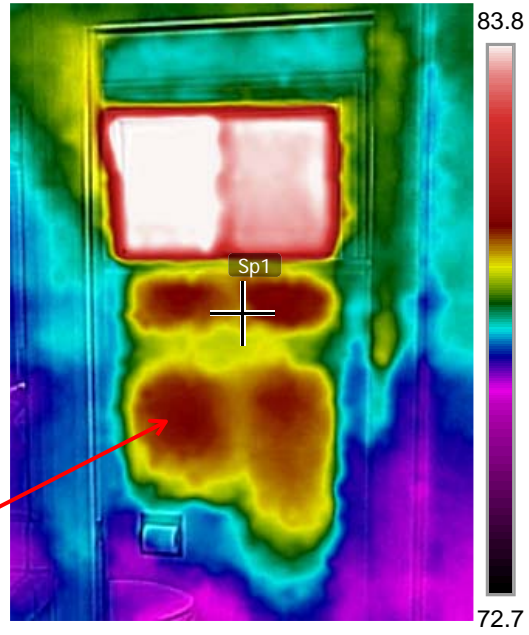
Measurements °F

Sp1	79.7
-----	------

Parameters

Emissivity	0.95
Ref. temp.	68 °F

6/4/2016 12:59:04 PM



Example of no insulation.

FLIR0078.jpg FLIR C2 720041374

6/4/2016 12:59:04 PM



FLIR0078.jpg FLIR C2 720041374